

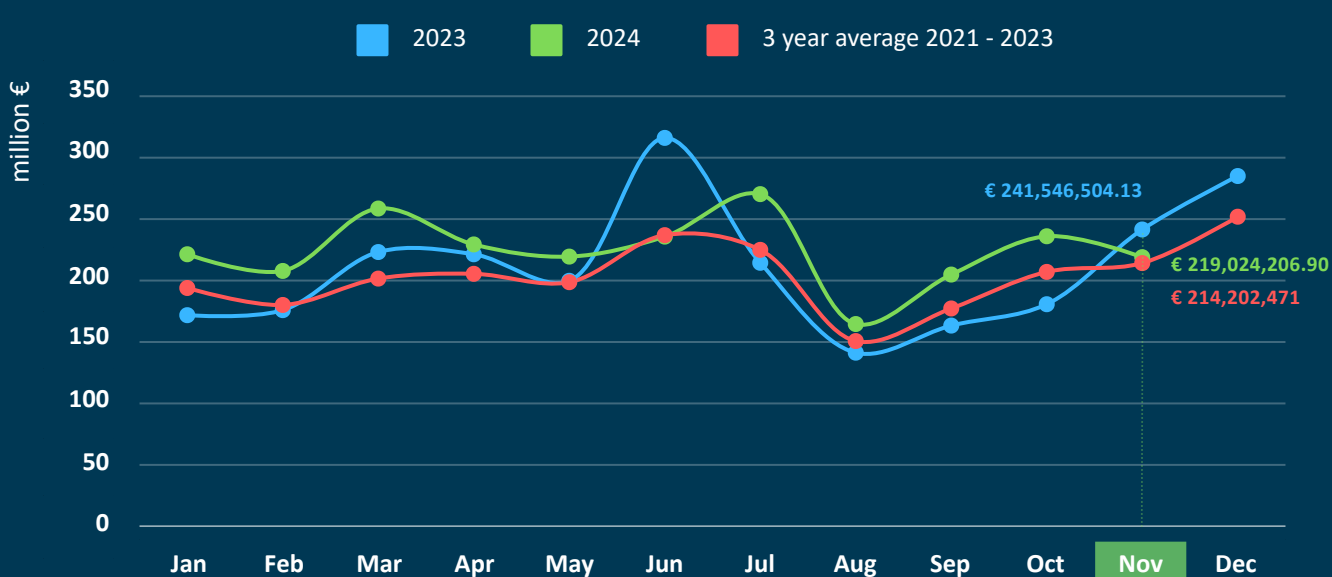


Insurance Premium

	Jan-Nov 2024	vs 2023
Life insurance	€ 2,472,746,405.79	+9.9%
Non-life insurance	€ 2,666,016,505.37	+9.7%
out of which		
Motor third party liability	€ 713,827,925.38	+5.1%
Other non-life	€ 1,952,188,579.99	+11.4%
Total	€ 5,138,762,911.16	+9.8%



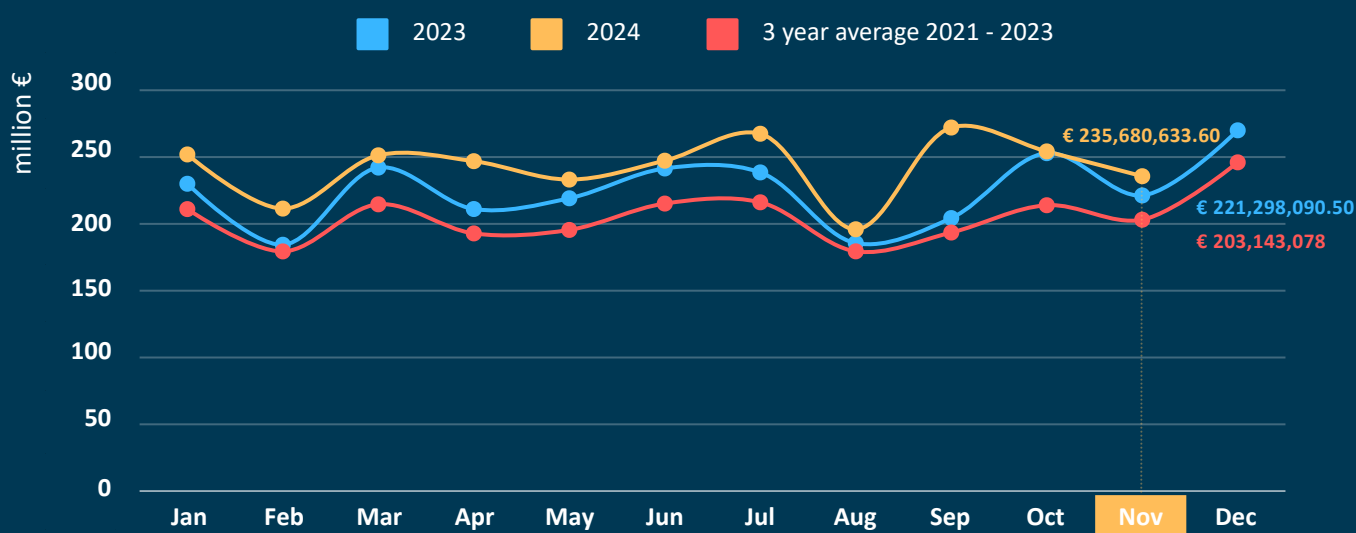
Life Insurance



Life Insurance	Jan-Nov 2024	vs 2023
I. Life Insurance	€ 1,095,222,209.20	+6.1%
III. Life insurance linked to investment	€ 1,078,629,954.37	+21.7%
VI. Capitalization	€ 0.00	---
VII. Management of group pension funds	€ 298,894,242.22	-9.8%
Total	€ 2,472,746,405.79	+9.9%



Non-Life Insurance



Non-Life Insurance	Jan-Nov 2024	vs 2023
1. Accidents	€ 46,821,465.61	+14.9%
2. Sickness	€ 470,571,824.98	+9.2%
3. Land vehicles	€ 299,929,233.05	+16.6%
5. Aircraft	€ 11,415.51	-99.8%
6. Ships (sea, lake, river vessels)	€ 14,689,237.77	+1.1%
7. Goods in transit	€ 30,399,840.18	+3.5%
8. Fire and natural forces	€ 402,410,242.80	+13.0%
9. Other damage to property	€ 189,452,596.87	+18.8%
10. Motor vehicle liability	€ 713,827,925.38	+5.1%
11. Aircraft civil liability	€ 527,897.37	+88.4%
12. Civil liability for ships	€ 8,569,084.69	+4.1%
13. General civil liability	€ 156,088,902.76	+10.6%
14. Credits	€ 53,854,080.15	+4.3%
15. Suretyship	€ 21,260,285.96	-8.9%
16. Miscellaneous financial losses	€ 73,138,349.07	+3.2%
17. Legal expenses	€ 31,067,943.84	+4.1%
18. Assistance	€ 153,396,179.38	+16.1%
Total	€ 2,666,016,505.37	+9.7%