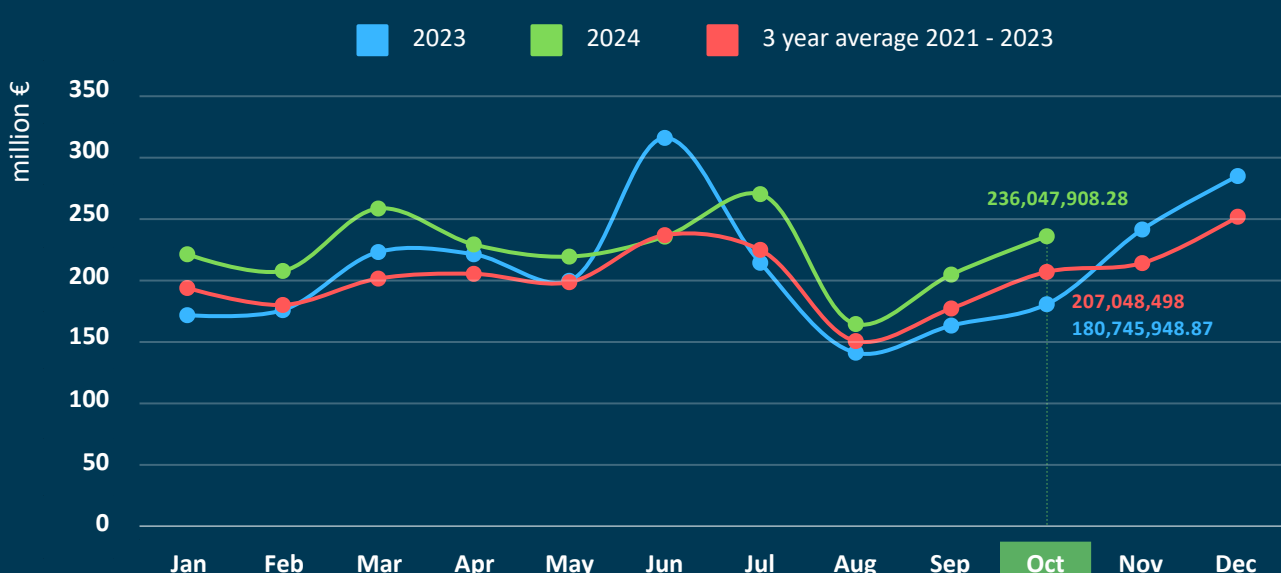




Insurance Premium (€)

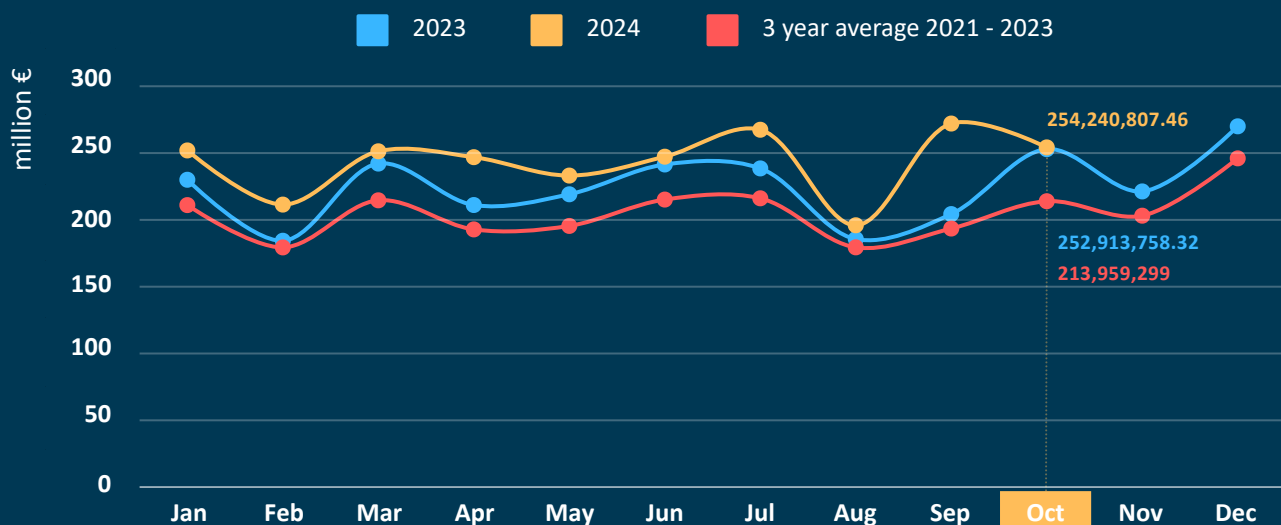
	Jan-Oct 2024	vs 2023
Life insurance	2,253,722,198.89	+12.2%
Non-life insurance	2,430,332,120.45	+10.0%
out of which		
Motor third party liability	653,425,152.00	+5.5%
Other non-life	1,776,906,968.45	+11.7%
Total	4,684,054,319.34	+11.1%

Life Insurance



Life Insurance (€)	Jan-Oct 2024	vs 2023
I. Life Insurance	1,004,186,066.31	+8.7%
III. Life insurance linked to investment	972,473,196.97	+25.2%
VI. Capitalization	0.00	---
VII. Management of group pension funds	277,062,935.61	-9.8%
Total	2,253,722,198.89	+12.2%

Non-Life Insurance



Non-Life Insurance (€)	Jan-Oct 2024	vs 2023
1. Accidents	42,259,989.50	+14.0%
2. Sickness	427,618,253.81	+9.1%
3. Land vehicles	272,302,140.76	+16.9%
5. Aircraft	11,415.51	-99.7%
6. Ships (sea, lake, river vessels)	13,789,584.21	+1.4%
7. Goods in transit	27,663,256.60	+2.0%
8. Fire and natural forces	365,406,812.72	+14.4%
9. Other damage to property	169,975,375.17	+18.1%
10. Motor vehicle liability	653,425,152.00	+5.5%
11. Aircraft civil liability	488,988.89	+88.5%
12. Civil liability for ships	8,150,811.72	+1.8%
13. General civil liability	145,667,966.64	+11.3%
14. Credits	49,931,222.09	+3.8%
15. Suretyship	19,554,405.65	-13.0%
16. Miscellaneous financial losses	66,252,217.68	+5.9%
17. Legal expenses	28,273,898.53	+4.0%
18. Assistance	139,560,628.97	+16.1%
Total	2,430,332,120.45	+10.0%