



## Insurance Premium HAIC Monthly Survey

---

January - September 2024



HELLENIC  
ASSOCIATION  
OF INSURANCE  
COMPANIES

## Executive Summary

### Survey Factors

- Monthly survey with questionnaire
- Classification of insurance branches according to Law 4364 /2016
  - Non-Life Insurance
  - Life Insurance
- Comparison of gross direct written premium production of the same enterprises versus 2023
- Source: monthly reports of insurance undertakings which have not been audited by statutory auditors

### Participation in the survey

- 48 Insurance Enterprises
  - 26 Insurance Enterprises established in Greece (S.A.)
  - 1 Mutual Insurance Cooperative
  - 15 Branches of foreign Insurance Enterprises
  - 6 European Insurance Enterprises under the freedom to provide services status

### Survey Results

	Jan - Sep 2024	/ Jan - Sep 2023
○ Total Insurance Premium	4,193,911,988.26	+10.8%
○ Life Insurance Premium	2,017,674,290.62	+10.4%
○ Non-life insurance premium	2,176,237,697.64	+11.2%
Of which: Motor third party Liability	586,699,836.03	+5.3%

## Survey Results

HAIC conducts a monthly survey of premium production among its Member Companies. A total of 48 insurance enterprises responded, of which 43 were active in Non-Life insurance and 14 in Life insurance.

Of the 48 insurance enterprises, 26 were established in Greece in the form of S.A. Insurance Company, 1 in the form of mutual insurance cooperative, 15 as branches of foreign insurance enterprises and 6 European insurance enterprises operating under the freedom to provide services status.

According to the collected data (after adjusting the data of the previous period with newer replies), a comparison of the premium production of the period January - September 2024 of the above enterprises, with that of the same period for 2023 of the same enterprises is following:

**Table 1: January - September 2024 Insurance Premium (€)**

	January - September 2024	Versus 2023
<b>Life Insurance</b>	<b>2,017,674,290.62</b>	<b>+10.4%</b>
<b>Non-Life Insurance</b>	<b>2,176,237,697.64</b>	<b>+11.2%</b>
Out of which		
Motor third party liability	586,699,836.03	+5.3%
Other non-life	1,589,537,861.61	+13.6%
<b>Total</b>	<b>4,193,911,988.26</b>	<b>+10.8%</b>

The figures reported refer to the total gross written premium from direct insurance (including policy fees) in full amounts (periodic payments and one-off payment of premiums as well), as they are classified in the insurance branches according to Law 4364/2016 (after adjusting the data of the previous period).

The following tables record in detail the results of premium production survey per insurance branch (Life and Non-Life) for the period January - September 2024 as well as their percentage change compared to the corresponding period of 2023:

Table 2: Life Insurance (€)

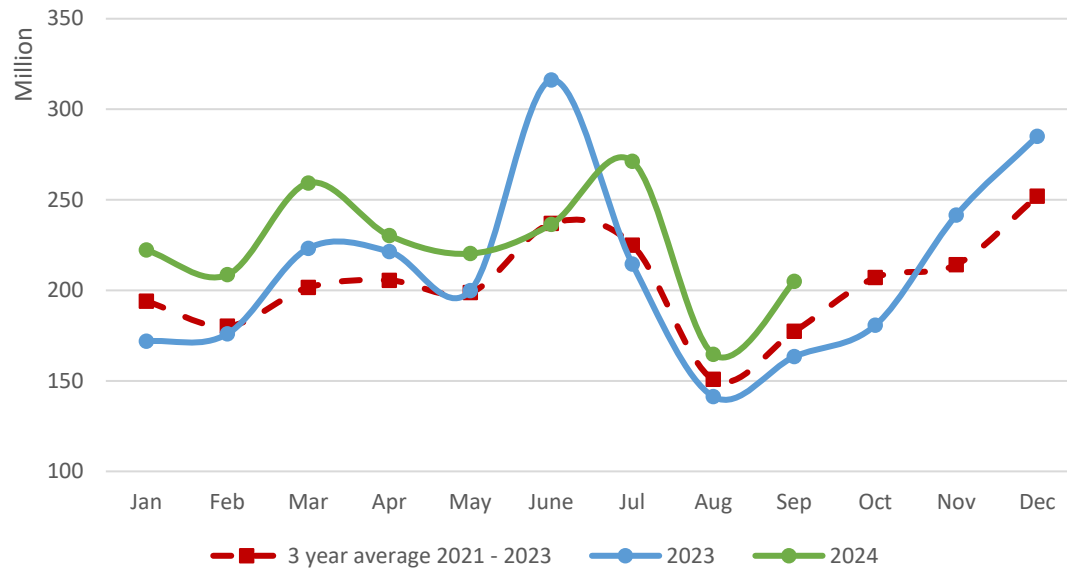
	January – September 2024	Share	Versus 2023
I. Life Insurance	901,951,994.07	44.7%	+8.8%
III. Life Insurance linked to investments	863,196,477.98	42.8%	+21.1%
VI. Capitalization	0.00	0.0%	---
VII. Management of group pension funds	252,525,818.57	12.5%	-11.6%
<b>Total</b>	<b>2,017,674,290.62</b>	<b>100%</b>	<b>+10.4%</b>

Table 3: Non-life insurance (€)

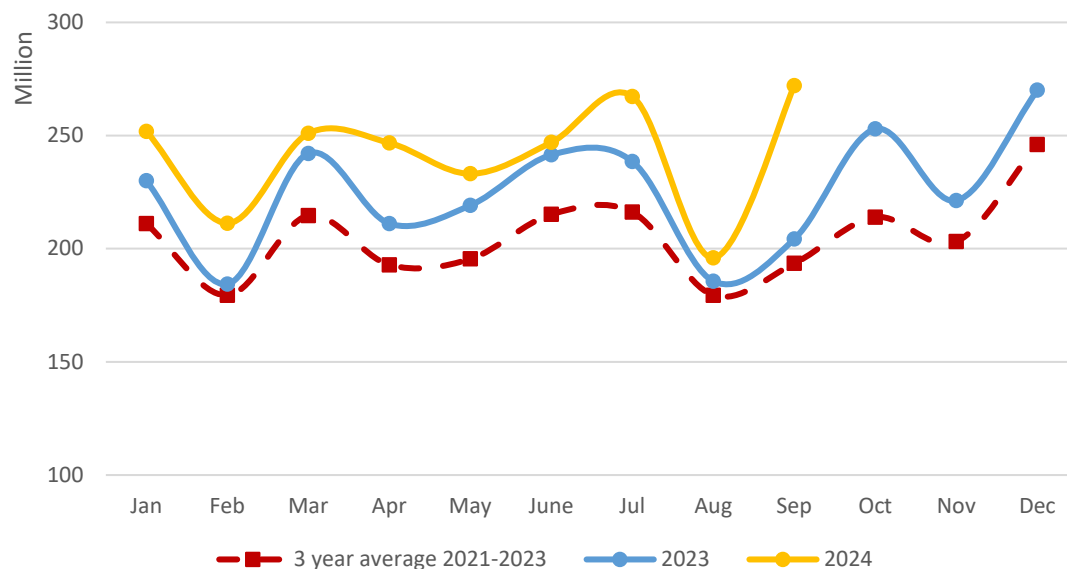
	January - September 2024	Share	Versus 2023
1. Accidents	37,520,992.30	1.7%	+13.3%
2. Sickness	380,032,677.57	17.4%	+8.7%
3. Land vehicles	243,880,128.68	11.2%	+16.8%
5. Aircraft	11,233.03	0.001%	-99.6%
6. Ships (sea, lake, river)	12,904,148.70	0.6%	+2.3%
7. Goods in transit	25,208,427.42	1.2%	+1.9%
8. Fire and natural forces	331,846,030.80	15.2%	+25.6%
9. Other damage to property	152,388,487.21	7.0%	+17.3%
10. Motor vehicle liability	586,699,836.03	27.0%	+5.3%
11. Aircraft civil liability	469,293.89	0.02%	+81.1%
12. Ship civil liability	7,842,000.95	0.4%	+1.9%
13. General civil liability	126,690,167.41	5.8%	+5.8%
14. Credits	43,660,897.24	2.0%	+2.9%
15. Suretyship	16,402,463.09	0.8%	+18.2%
16. Miscellaneous financial losses	60,617,279.95	2.8%	+5.3%
17. Legal expenses	25,273,021.34	1.2%	+3.8%
18. Assistance	124,790,612.03	5.7%	+15.7%
<b>Total</b>	<b>2,176,237,697.64</b>	<b>100%</b>	<b>+11.2%</b>

The following two graphs depict the premium production evolution per month, for the period January 2023 – September 2024, separately for Life and Non-Life Insurance. The average premium production per month for the last three years (2021 - 2023) is shown with a third dashed line.

**Figure 1: Life Insurance: Premium 2023-2024 per month (€)**



**Figure 2: Non-Life Insurance: Premium 2023-2024 per month (€)**



## Insurance Premium Production: September 2024

The following tables record in detail the premium production results of the survey per insurance branch (Life and Non-Life) of September 2024 as well as their percentage change compared to the corresponding ones of September 2023:

**Table 4: Life Insurance (€)**

	September 2024	Versus September 2023
I. Life Insurance	91,385,574.24	+8.2%
III. Life Insurance linked to investments	85,772,649.99	+53.2%
VI. Capitalization	0.00	---
VII. Management of group pension funds	27,728,272.91	+21.0%
<b>Total</b>	<b>204,886,497.14</b>	<b>+25.4%</b>

**Table 5: Non-Life Insurance (€)**

	September 2024	Versus September 2023
1. Accidents	5,019,896.70	+48.0%
2. Sickness	44,959,637.29	+9.8%
3. Land vehicles	28,004,157.41	+23.7%
5. Aircraft	54.78	----
6. Ships (sea, lake, river)	891,791.81	+19.5%
7. Goods in transit	2,119,200.77	-0.9%
8. Fire and natural forces	68,734,877.33	+140.9%
9. Other damage to property	14,773,740.98	+27.6%
10. Motor vehicle liability	65,457,366.19	+12.6%
11. Aircraft civil liability	130,978.05	----
12. Ship civil liability	499,253.85	-8.4%
13. General civil liability	11,510,962.62	+13.9%
14. Credits	4,796,774.26	+3.3%
15. Suretyship	1,891,289.64	+201.4%
16. Miscellaneous financial losses	5,749,276.86	+10.7%
17. Legal expenses	2,829,503.93	+8.7%
18. Assistance	14,728,377.98	+27.1%
<b>Total</b>	<b>272,097,140.45</b>	<b>+33.2%</b>

<b>Total September (Life &amp; Non-Life) (€)</b>	<b>476,983,637.59</b>	<b>+29.7%</b>
--	-----------------------	---------------