

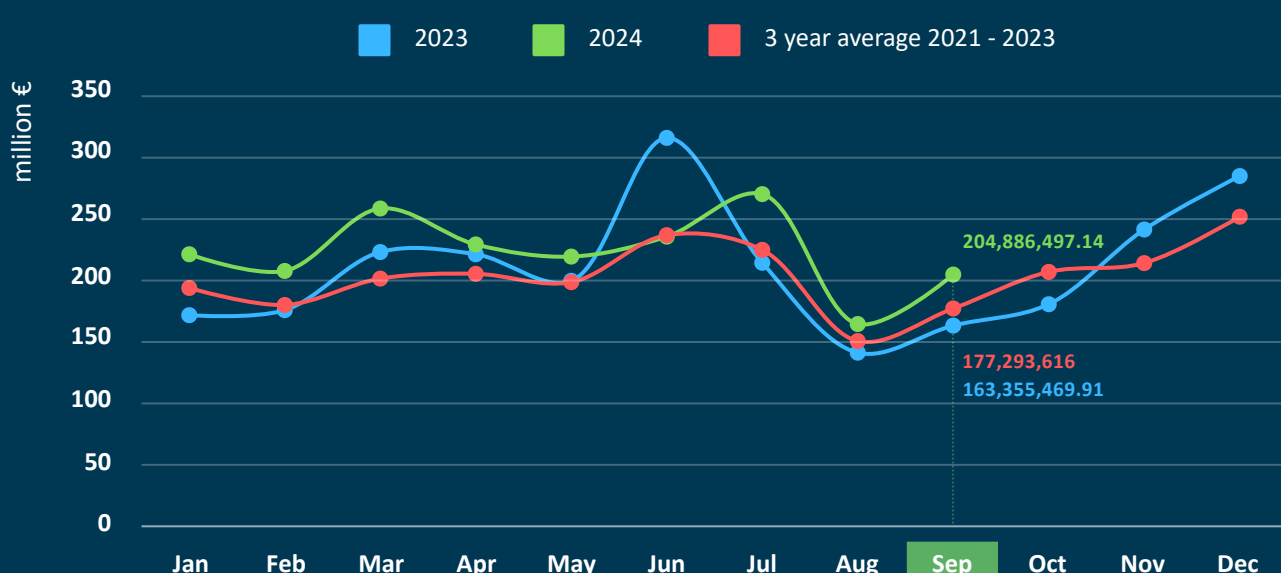


Insurance Premium (€)

	Jan-Sep 2024	vs 2023
Life insurance	2,017,674,290.62	+10.4%
Non-life insurance	2,176,237,697.64	+11.2%
out of which		
Motor third party liability	586,699,836.03	+5.3%
Other non-life	1,589,537,861.61	+13.6%
Total	4,193,911,988.26	+10.8%



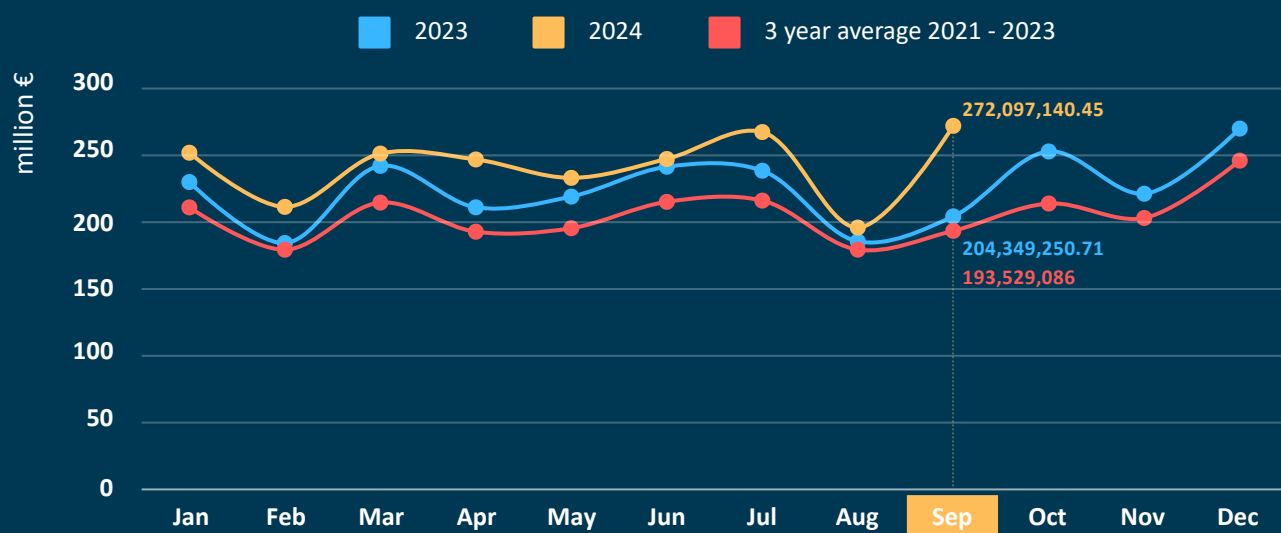
Life Insurance



Life Insurance (€)	Jan-Sep 2024	vs 2023
I. Life Insurance	901,951,994.07	+8.8%
III. Life insurance linked to investment	863,196,477.98	+21.1%
VI. Capitalization	0.00	---
VII. Management of group pension funds	252,525,818.57	-11.6%
Total	2,017,674,290.62	+10.4%



Non-Life Insurance



Non-Life Insurance (€)	Jan-Sep 2024	vs 2023
1. Accidents	37,520,992.30	+13.3%
2. Sickness	380,032,677.57	+8.7%
3. Land vehicles	243,880,128.68	+16.8%
5. Aircraft	11,233.03	-99.6%
6. Ships (sea, lake, river vessels)	12,904,148.70	+2.3%
7. Goods in transit	25,208,427.42	+1.9%
8. Fire and natural forces	331,846,030.80	+25.6%
9. Other damage to property	152,388,487.21	+17.3%
10. Motor vehicle liability	586,699,836.03	+5.3%
11. Aircraft civil liability	469,293.89	+81.1%
12. Civil liability for ships	7,842,000.95	+1.9%
13. General civil liability	126,690,167.41	+5.8%
14. Credits	43,660,897.24	+2.9%
15. Suretyship	16,402,463.09	+18.2%
16. Miscellaneous financial losses	60,617,279.95	+5.3%
17. Legal expenses	25,273,021.34	+3.8%
18. Assistance	124,790,612.03	+15.7%
Total	2,176,237,697.64	+11.2%