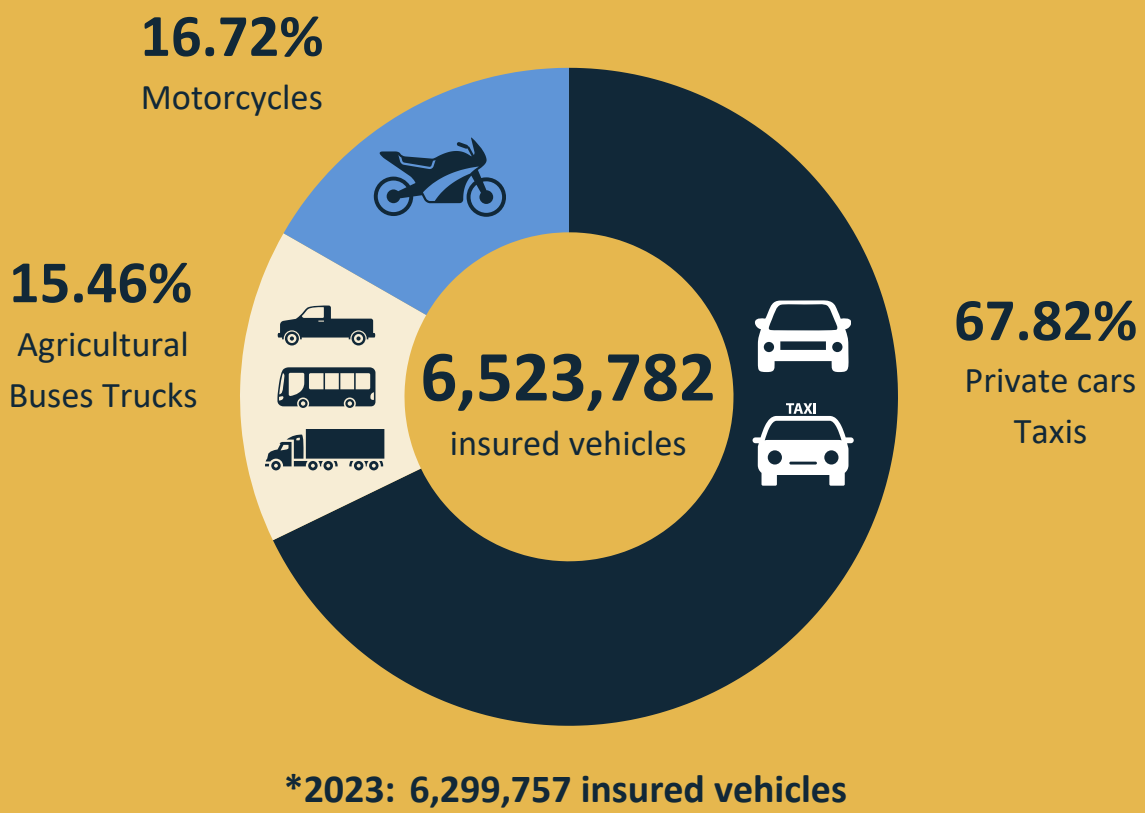




# Motor Insurance

## First estimation of key ratios for 2024



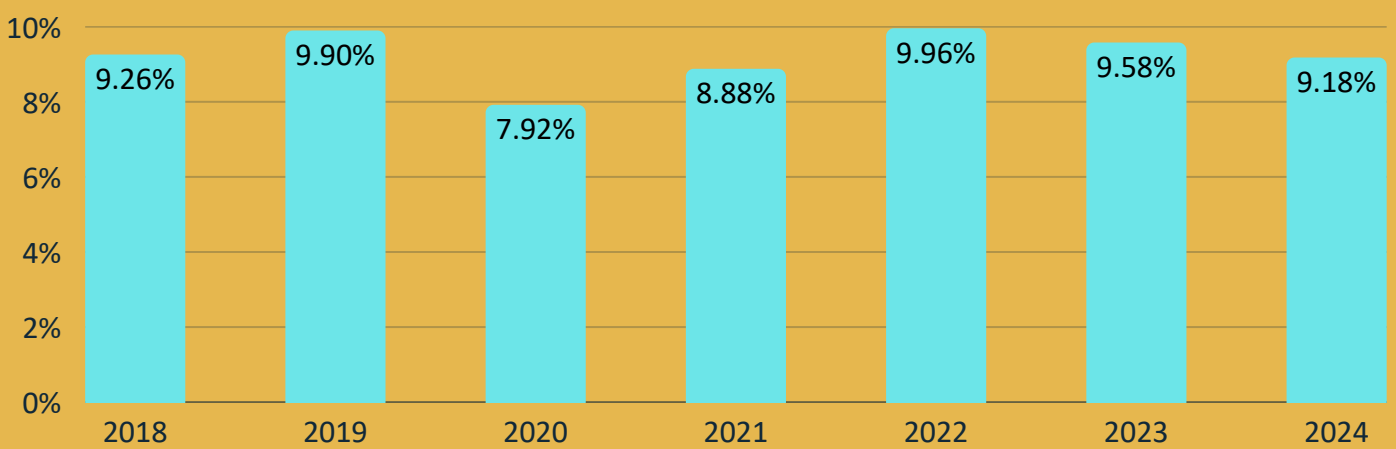
### Motor Insurance key ratios

Accident year – first estimation

	2023	2024
Claims Frequency (total covers)	9.58%	9.18%
Claims Frequency MTPL	7.01%	6.78%
Average claim cost (€) (total covers)	1,265	1,285
Average claim cost MTPL (€)	1,397	1,405

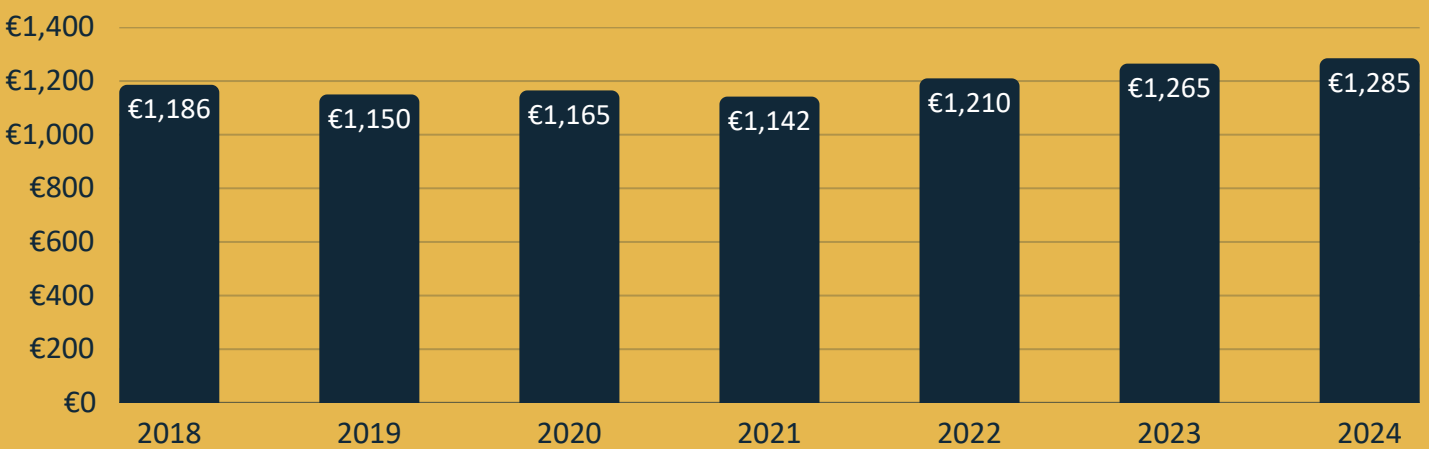
### Claims frequency 2018- 2024: All covers

First year estimation



### Average claim 2018-2024 (€): All covers

First year estimation



- 2024: Provisional data of 27 Insurance Companies with 95.6% participation in total motor insurance premium
- 2023: Final data of 29 Insurance Companies with 96% participation in total motor insurance premium

