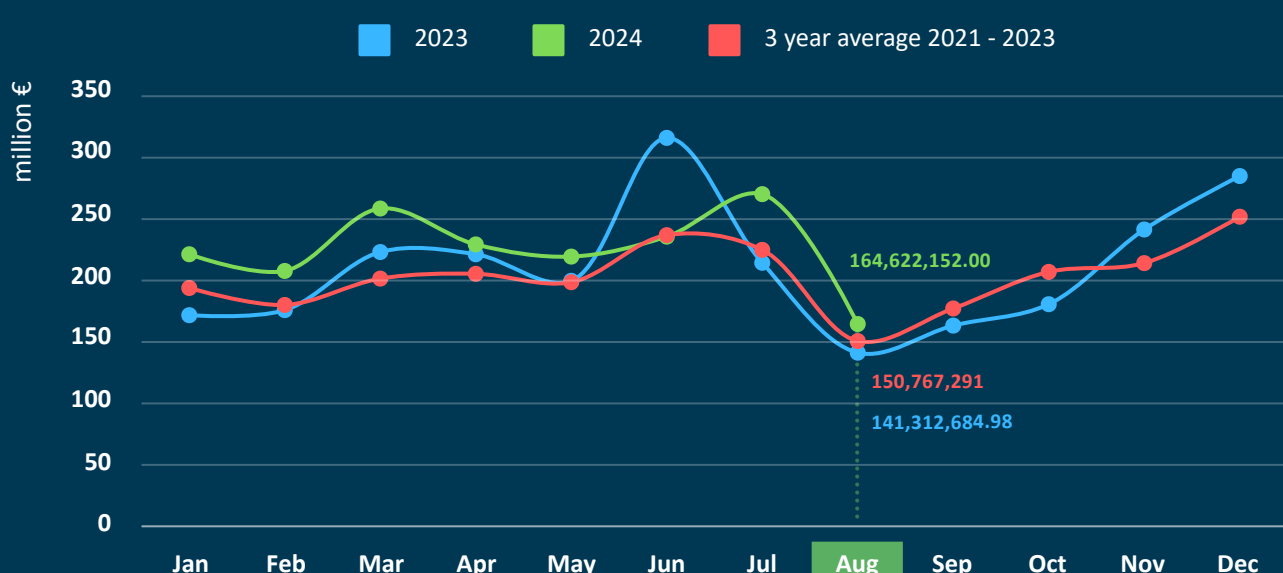




### Insurance Premium (€)

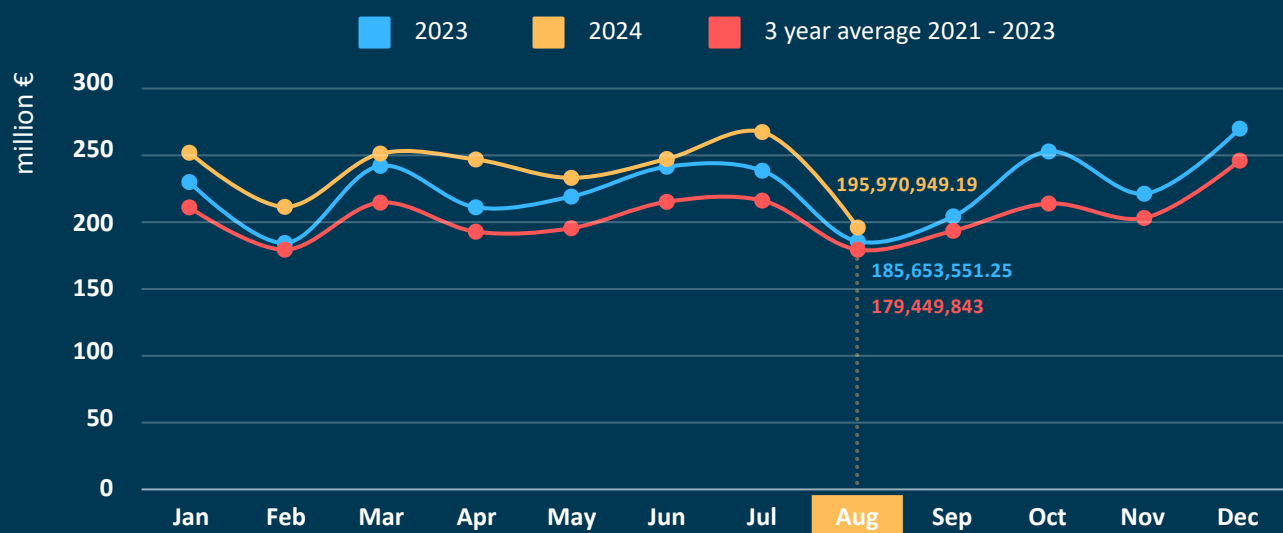
	Jan-Aug 2024	vs 2023
Life insurance	1,812,787,793.47	+8.9%
Non-life insurance	1,904,140,557.19	+8.7%
out of which		
Motor third party liability	521,242,469.84	+4.4%
Other non-life	1,382,898,087.35	+10.3%
<b>Total</b>	<b>3,716,928,350.66</b>	<b>+8.8%</b>

### Life Insurance



Life Insurance (€)	Jan-Aug 2024	vs 2023
I. Life Insurance	810,566,419.82	+8.8%
III. Life insurance linked to investment	777,423,827.99	+18.4%
VI. Capitalization	0.00	---
VII. Management of group pension funds	224,797,545.66	-14.5%
<b>Total</b>	<b>1,812,787,793.47</b>	<b>+8.9%</b>

### Non-Life Insurance



Non-Life Insurance (€)	Jan-Aug 2024	vs 2023
1. Accidents	32,501,095.60	+9.3%
2. Sickness	335,073,040.28	+8.5%
3. Land vehicles	215,875,971.27	+16.0%
5. Aircraft	11,178.25	-99.4%
6. Ships (sea, lake, river vessels)	12,012,356.89	+1.3%
7. Goods in transit	23,089,226.65	+2.1%
8. Fire and natural forces	263,111,153.47	+11.7%
9. Other damage to property	137,614,746.23	+16.3%
10. Motor vehicle liability	521,242,469.84	+4.4%
11. Aircraft civil liability	338,315.84	+32.9%
12. Civil liability for ships	7,342,747.10	+2.7%
13. General civil liability	115,179,204.78	+5.1%
14. Credits	38,864,122.98	+2.9%
15. Suretyship	14,511,173.45	+9.5%
16. Miscellaneous financial losses	54,868,003.09	+4.8%
17. Legal expenses	22,443,517.41	+3.2%
18. Assistance	110,062,234.06	+14.3%
<b>Total</b>	<b>1,904,140,557.19</b>	<b>+8.7%</b>