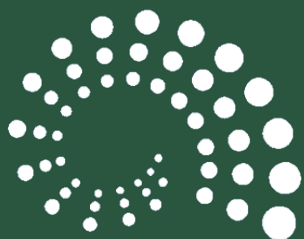




## Insurance Premium HAIC Monthly Survey

---



HELLENIC  
ASSOCIATION  
OF INSURANCE  
COMPANIES

January - May 2024

## Executive Summary

### Survey Factors

- Monthly survey with questionnaire
- Classification of insurance branches according to Law 4364 /2016
  - Non-Life Insurance
  - Life Insurance
- Comparison of gross direct written premium production of the same enterprises versus 2023
- Source: monthly reports of insurance undertakings which have not been audited by statutory auditors

### Participation in the survey

- 47 Insurance Enterprises
  - 26 Insurance Enterprises established in Greece (S.A.)
  - 1 Mutual Insurance Cooperative
  - 15 Branches of foreign Insurance Enterprises
  - 5 European Insurance Enterprises under the freedom to provide services status

### Survey Results

	Jan - May 2024	/ Jan - May 2023
○ Total Insurance Premium	2,331,303,824.80	+12.1%
○ Life Insurance Premium	1,136,747,019.31	+14.6%
○ Non-life insurance premium	1,194,556,805.49	+9.9%
Of which: Motor third party Liability	329,998,920.19	+4.6%

## Survey Results

HAIC conducts a monthly survey of premium production among its Member Companies. A total of 47 insurance enterprises responded, of which 42 were active in Non-Life insurance and 14 in Life insurance.

Of the 47 insurance enterprises, 26 were established in Greece in the form of S.A. Insurance Company, 1 in the form of mutual insurance cooperative, 15 as branches of foreign insurance enterprises and 5 European insurance enterprises operating under the freedom to provide services status.

According to the collected data (after adjusting the data of the previous period with newer replies), a comparison of the premium production of the period January - May 2024 of the above enterprises, with that of the same period for 2023 of the same enterprises is following:

**Table 1: January - May 2024 Insurance Premium (€)**

	January - May 2024	Versus 2023
<b>Life Insurance</b>	<b>1,136,747,019.31</b>	<b>+14.6%</b>
<b>Non-Life Insurance</b>	<b>1,194,556,805.49</b>	<b>+9.9%</b>
Out of which		
Motor third party liability	329,998,920.19	+4.6%
Other non-life	864,557,885.30	+12.1%
<b>Total</b>	<b>2,331,303,824.80</b>	<b>+12.1%</b>

The figures reported refer to the total gross written premium from direct insurance (including policy fees) in full amounts (periodic payments and one-off payment of premiums as well), as they are classified in the insurance branches according to Law 4364/2016 (after adjusting the data of the previous period).

The following tables record in detail the results of premium production survey per insurance branch (Life and Non-Life) for the period January - May 2024 as well as their percentage change compared to the corresponding period of 2023:

Table 2: Life Insurance (€)

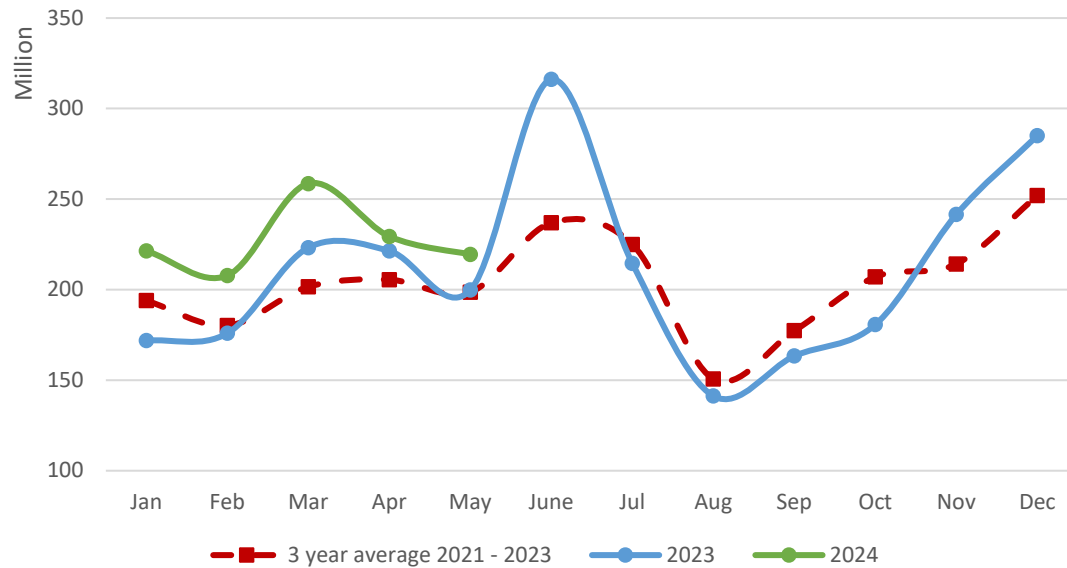
	January – May 2024	Share	Versus 2023
I. Life Insurance	519,215,899.92	45.7%	+6.5%
III. Life Insurance linked to investments	474,390,058.08	41.7%	+38.5%
VI. Capitalization	0	0.0%	---
VII. Management of group pension funds	143,141,061.31	12.6%	-11.6%
<b>Total</b>	<b>1,136,747,019.31</b>	<b>100%</b>	<b>+14.6%</b>

Table 3: Non-life insurance (€)

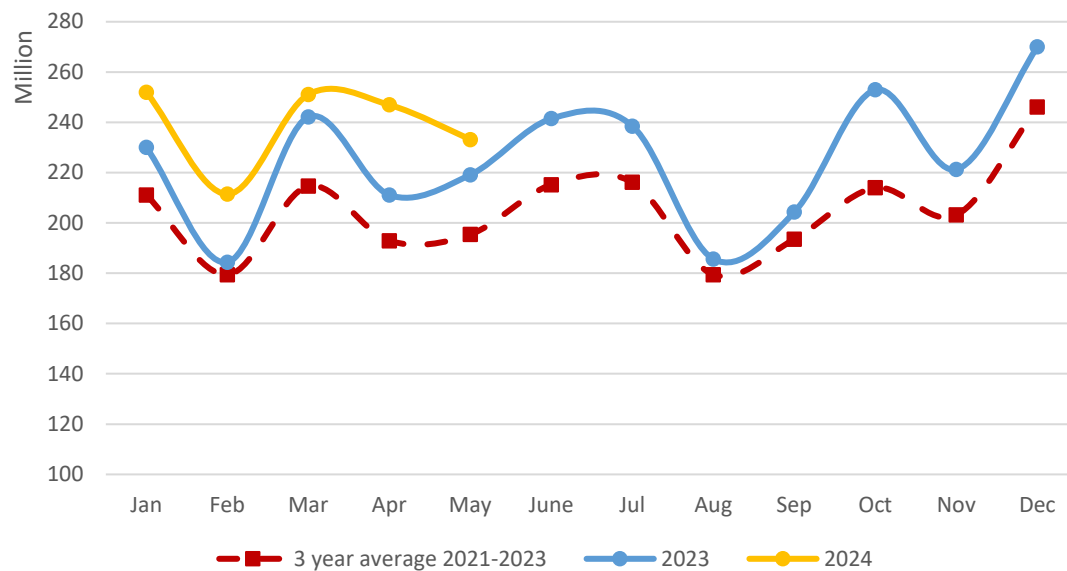
	January - May 2024	Share	Versus 2023
1. Accidents	20,136,362.32	1.7%	+5.3%
2. Sickness	217,299,718.71	18.2%	+11.8%
3. Land vehicles	135,780,137.47	11.4%	+16.6%
5. Aircraft	179.34	0.0001%	+26.3%
6. Ships (sea, lake, river)	6,749,231.87	0.6%	+2.1%
7. Goods in transit	15,039,203.21	1.3%	+2.3%
8. Fire and natural forces	159,908,491.94	13.4%	+15.3%
9. Other damage to property	86,104,040.58	7.2%	+19.6%
10. Motor vehicle liability	329,998,920.19	27.6%	+4.6%
11. Aircraft civil liability	216,368.22	0.02%	+21.9%
12. Ship civil liability	3,712,535.91	0.3%	+3.1%
13. General civil liability	70,056,834.77	5.9%	+3.5%
14. Credits	23,979,983.93	2.0%	+4.4%
15. Suretyship	9,018,957.49	0.7%	-3.4%
16. Miscellaneous financial losses	33,715,642.56	2.8%	+4.6%
17. Legal expenses	14,158,343.84	1.2%	+3.8%
18. Assistance	68,681,853.13	5.7%	+14.8%
<b>Total</b>	<b>1,194,556,805.49</b>	<b>100%</b>	<b>+9.9%</b>

The following two graphs depict the premium production evolution per month, for the period January 2023 – May 2024, separately for Life and Non-Life Insurance. The average premium production per month for the last three years (2021 - 2023) is shown with a third dashed line.

**Figure 1: Life Insurance: Premium 2023-2024 per month (€)**



**Figure 2: Non-Life Insurance: Premium 2023-2024 per month (€)**



## Insurance Premium Production: May 2024

The following tables record in detail the premium production results of the survey per insurance branch (Life and Non-Life) of May 2024 as well as their percentage change compared to the corresponding ones of May 2023:

**Table 4: Life Insurance (€)**

	May 2024	Versus May 2023
I. Life Insurance	97,497,432.16	+10.2%
III. Life Insurance linked to investments	91,041,520.36	+37.8%
VI. Capitalization	0	---
VII. Management of group pension funds	30,964,091.69	-31.6%
<b>Total</b>	<b>219,503,044.21</b>	<b>+9.9%</b>

**Table 5: Non-Life Insurance (€)**

	May 2024	Versus May 2023
1. Accidents	4,047,667.14	-4.0%
2. Sickness	43,829,974.64	+11.5%
3. Land vehicles	27,551,297.99	+9.6%
5. Aircraft	-54.78	---
6. Ships (sea, lake, river)	1,934,093.94	-2.9%
7. Goods in transit	3,202,590.92	+19.7%
8. Fire and natural forces	28,871,215.90	+11.3%
9. Other damage to property	15,744,717.13	+10.0%
10. Motor vehicle liability	65,555,885.21	+2.1%
11. Aircraft civil liability	36,619.59	+44.6%
12. Ship civil liability	1,133,873.50	-14.1%
13. General civil liability	11,712,438.83	-6.1%
14. Credits	3,876,811.47	-3.4%
15. Suretyship	1,891,511.05	+24.7%
16. Miscellaneous financial losses	6,886,864.32	+2.1%
17. Legal expenses	2,877,083.56	+1.2%
18. Assistance	14,009,618.93	+12.9%
<b>Total</b>	<b>233,162,209.34</b>	<b>+6.4%</b>

<b>Total May (Life &amp; Non-Life) (€)</b>	<b>452,665,253.55</b>	<b>+8.0%</b>
--	-----------------------	--------------